

**TRAINING**



**LIVE VIRTUAL  
TRAINING  
27 - 29 JULY 2022**



# **CRISIS MANAGEMENT**



**YOUR COURSE GWJI**



**DR. JAMES WATTERSON**  
Professional Management  
Consultant

## **KEY TOPICS**

**Structure and Development of a Crisis Management Plan.**

**Crisis Vs Emergency management.**

**Structure of Crisis/Emergency Response Plans.**

**Organisation of the Crisis Management Team.**

**Communication and Reporting of a Crisis Management Team**

**Emergency Response Planning.**

**How ER meshes with security.**



## **Overview and objectives of the 3 day course**

**To enhance the participants' understanding of planning and practice with relation to Emergency Response Planning & Crisis; to improve the linkage and touch points between Safety Management, Security Management and Emergency Response and preparedness.**

## **How the course will be conducted**

**The programme will be supported by comprehensive manual and supporting power point presentation.**

**Case studies.**

**DVDs explaining the importance of an effective crisis management process and the catastrophic outcome if one is absent or is not operated in an effective manner.**

**The participants are encouraged to develop a positive attitude to this all important subject.**

**Delegates will leave the course with important tips and techniques to use in crisis management.**



**@ [info@gwijafrica.com](mailto:info@gwijafrica.com)**



**+254 725 373 313  
+254 750 800 230**



**[www.gwijafrica.com](http://www.gwijafrica.com)**



## Meet your course Gwiji

James is a highly experienced professional management consultant and lead trainer with over 35 years' experience in various disciplines: Engineering, Maintenance, Marketing, Project and Contract Management in geographies spanning Ireland, UK, Australia, USA, Canada, UAE, India, Pakistan, Iran, Qatar, Saudi Arabia, Ghana, Kuwait, Oman, Trinidad & Tobago, Kuala Lumpur, Bahrain, Sarawak, Libya, Algeria, Nigeria amongst others.

He is a renowned and much respected technical author with titles to his name being:

- Diagnostic Skills
- Rotating Equipment: Maintenance and Troubleshooting • Tribology: A Simple Guide To The Study of Friction • A Simple Guide to Understanding Compressors
- Professional Memberships:
  - Fellow of the Institute of Operation's Management • Fellow of the Royal Graphical Society
  - Member of British Institute of Management
- Chartered Member of the Institute of Logistics & Transport • Member of the American Society for Quality

**Global conglomerates that have benefited from Dr. James' expertise include but not limited to:**

- ADCO •ADMA-OPCO •ARAMCO •BP-SARAWAK •CRISTAL •DEWA •ENI-GAS •GASCO
- KUWAIT-KPC •NIGERIA LNG •OMAN GAS CORP •OMAN LNG •OMAN OCCIDENTIAL
- OMAN RPC •PRICE WATERHOUSE •COOPERS •QP-QATAR •RASCO OIL •SABIC INDUSTRIES •SEC •SIRTE OIL •SWEA •TAKREER •WAHA OIL •ZADCO •ZUETINA

### METHODOLOGY FOR TRAINING

- Fully comprehensive manual (soft copy)
- Full deck of supporting powerpoint presentations
- Safety videos
- Case studies from the USA Safety Board
- Group Studies.



@ [info@gwijafrica.com](mailto:info@gwijafrica.com)



+254 725 373 313  
+254 750 800 230



[www.gwijafrica.com](http://www.gwijafrica.com)



- **Structure and Development of a Crisis Management Plan**
- **Crisis Vs Emergency Management**
- **Assessing Risk**
- **Structure of Crisis/Emergency Response Plans**
  
- **Organisation of the Crisis Management Team**
- **Command and Control**
- **Roles and Responsibilities**
- **Facilities- CMT Control Room**



@ [info@gwijafrica.com](mailto:info@gwijafrica.com)



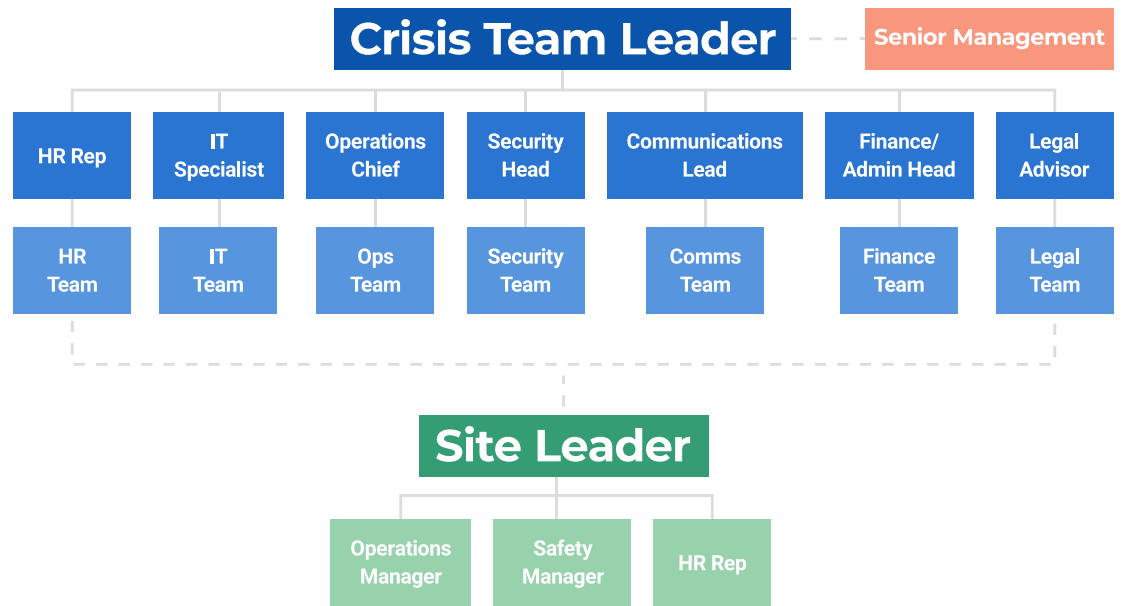
+254 725 373 313  
+254 750 800 230



[www.gwijafrica.com](http://www.gwijafrica.com)



# Crisis Management Team Organization Chart



- **Communication and Reporting of a Crisis Management Team**
- **Reporting the Crisis**
- **Communication Network and Equipment**
- **Training and Exercises**
- **Training Programmes**



@ [info@gwijafrica.com](mailto:info@gwijafrica.com)



+254 725 373 313  
+254 750 800 230



[www.gwijafrica.com](http://www.gwijafrica.com)



- **Emergency Response Planning**
- **What is Emergency Response (ER)?**
- **How ER meshes with security**
- **What should be in the plans**



@ [info@gwijafrica.com](mailto:info@gwijafrica.com)



+254 725 373 313  
+254 750 800 230





# ~~UNPREPARED~~

This course is available as a public and in-house and is delivered as a LVT- Live Virtual Training



**\$ 900 PER PERSON**



@ [info@gwijafrica.com](mailto:info@gwijafrica.com)



+254 725 373 313  
+254 750 800 230



[www.gwijafrica.com](http://www.gwijafrica.com)